



# WELDING CNC

MACHINES

CATALOG



**ORDER NOW**



More information  
[www.goldstarcnc.us](http://www.goldstarcnc.us)



More information  
(786) 400-0910



# PRO WELD 42

Pro Weld 42 is a small, portable CNC fiber laser welding machine with three power options: 1kW, 2kW and 3kW. It is suitable for welding gold, silver, titanium, nickel, tin, copper, aluminum and other metals and alloys. It can achieve precision welding between similar and dissimilar metals. Widely used in aerospace equipment, shipbuilding, instrumentation, mechanical and electrical products, automotive and other industries.

## TECHNICAL SPECIFICATIONS

Laser power: 1/2/3 kW

Center wave length: 1070 ± 5nm

Laser frequency: 50Hz-5KHz

Work patterns: Continuous

Electricity demand:

Voltage 240V Single Phase 60Hz and 240 Three Phase 60 Hz.

Output fiber length: 16 ft / 33 ft / 49 ft (Optional)

Cooling method: Water Cooling

Cooling water temperature: 41-113°F

Average consumed power: 3 kW / 4 kW

Laser Energy Stability: <2%

Air humidity: 10-90%

## Features

- ☑ **Machine size:** 4ft\*2ft\*4ft.
- ☑ **Machine weight:** approximately 606 pounds.
- ☑ High energy density with low heat input.
- ☑ Narrow and deep fusion zone and heat affected zone.
- ☑ High speed water cooling.
- ☑ No electrodes needed, reducing maintenance costs and increasing work efficiency.
- ☑ Welding with a thin seam with high penetration depth and a small cone for high precision.
- ☑ Smooth, flat and beautiful appearance.
- ☑ No consumables required.
- ☑ Small size for flexible processing.
- ☑ Low operation and maintenance costs.
- ☑ Laser transmitted through optical fibers for use with pipes or robots.

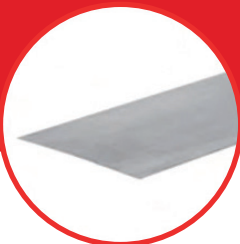
*Pro Weld 42 is an excellent welding solution that offers exceptional performance and versatility for a wide range of industries. Its compact design and advanced features make it an ideal choice for precision welding of various metals and alloys. With its low operation and maintenance costs, this machine is a cost-effective and reliable option for any welding application.*



Welding



Cleaning



Cutting



# ADVANCED WELD 42

Discover the exceptional capabilities of the Advanced Weld 42, a laser welding machine designed to elevate your welding experience. Crafted with precision and innovation in mind, this machine has a number of features that make it a standout choice in various industries.

## Features

- ☑ **Machine size:**  
4 ft \* 2 ft \* 5 ft.
- ☑ **Repetitive precision:**  
0.01 inches.
- ☑ **Laser welding depth (stainless steel):**  
From 0.08 to 3.6 inches.
- ☑ **Laser welding depth (carbon steel):**  
From 0.08 to 3.6 inches.
- ☑ **Laser welding depth (aluminum):**  
From 1 to 6 inches.
- ☑ **Laser power:**  
3 to 7 feet.
- ☑ **Oscillating welding head**  
Single or double.
- ☑ **Efficiency and user-centered design.**

- ☑ **Cooling type:**  
Water cooler that guarantees constant performance.
- ☑ **Operation mode:**  
Choose between continuation and modulation modes to precisely suit your welding requirements.
- ☑ **Laser wavelength:**  
It operates at a wavelength of 1070 nm.
- ☑ Reliable construction and compact design.
- ☑ **Pulse rate:**  
From 1 to 500 Hz.
- ☑ Integrated automatic wire feeder.
- ☑ **Point adjustment range:**  
0.1 to 3 inches.
- ☑ **Machine weight:**  
606 pounds.

*The Advanced Weld 42 encapsulates innovation, precision and efficiency, making it an ideal solution for various welding needs. Whether you work in aerospace, automotive, or any other industry that demands top-notch welding performance, this machine is ready to deliver remarkable results.*



# SUPER WELD 43

Discover the power of the SUPER WELD 43 high-power laser welding machine, designed for efficient water cooling and adapted for welding applications in iron, stainless steel and carbon steel.

## Features

☑ **Machine Dimensions:** 4 feet in length, 3 feet in width and 4 feet in height.

☑ **Machine Weight:** about 606 pounds.  
Efficient Water Cooler.

## Custom Laser Power Options

☑ **Laser Power:** 3 kW, 5 kW, and 7 kW.

## Easy to use control

☑ **Interface:**

Versatile parameters and settings.

☑ Oscillating welding head, single or double.

## Optimized performance metrics

☑ **Laser wavelength:** 1070nm.

☑ **Pulse frequency:** 1 to 500 Hz.

☑ Automatic wire feeder.

☑ **Point adjustment range:** 0.1 to 3 inches.

☑ **Repetitive Accuracy:** +0.01 inch.

☑ **Laser welding depth (stainless steel):** from 0.36 – 3.6 inches.

☑ **Laser welding depth (carbon steel):** from 0.36 – 3.96 inches.

☑ **Laser welding depth (aluminum):** from 0.48 – 2 inches.

## Efficiency and user-centered design

☑ **Cooling type:** water cooler.

☑ **Operation mode:** continuation and modulation modes.

*The SUPER WELD 43 High-Power Laser Welding Machine embodies versatility and precision, positioning it as the ideal solution for diverse welding needs. From iron to stainless steel and carbon steel, experience welding excellence like never before.*



# MINI WELD 3000

Discover the capabilities of the MINI WELD 3000 High Power Laser Welding Machine, a portable and versatile solution designed to revolutionize your welding experience. With cutting-edge features and precision performance, this machine is poised to excel in various industries.

## Features

- ☑ **Precision laser power:** 3 kw.
- ☑ **Advanced laser machine controller:** seamlessly control your welding processes with the advanced laser machine controller, ensuring optimal performance and adaptability.
- ☑ **Versatile wobble welding head:** choose between a single or double wobble welding head configuration, enhancing control and accuracy during welding procedures.
- ☑ **Laser wavelength:** 1070nm.
- ☑ **Customizable pulse frequency:** tailor your welding pace with a customizable pulse frequency ranging from 1 to 500hz, adapting to various welding scenarios.
- ☑ Integrated auto wire feeder.
- ☑ **Efficient water cooling system.**

- ☑ **Adaptable operate modes:** continuation and modulate modes to accurately match your welding requirements.

- ☑ **Laser welding depth (stainless steel):** 0.03 to 0.4 inches.

- ☑ **Laser welding depth (carbon steel):** 0.03 to 0.4 inches.

- ☑ **Laser welding depth (aluminum):** 0.03 to 0.4 inches.

- ☑ Versatile spot adjusting.

## Unmatched Precision

- ☑ **Repeating Precision:** 0.0004 in.

## Stable Power Supply

- ☑ **Voltage:** operate voltage 240v single phase 60hz and 240 three phase 60 hz.

*The MINI WELD 3000 High Power Laser Welding Machine stands as a testament to innovation and efficiency, making it an exceptional solution for a variety of welding needs.*



# POWER WELD 42

Unlock the potential of the Power Weld 42, a portable fiber laser welding machine created as the solution for a wide range of stainless steel, carbon steel, aluminum and copper welding applications.

## Compact and Efficient Design

### ☑ Dimensions:

Approximately 4 feet in length, 2 feet in width and 5 feet in height.

## Advanced Features

☑ High energy density and low heat input.

☑ Narrow, deep fusion zone and heat affected zone ensure precision.

☑ Higher cooling speed.

☑ Electrodeless laser welding.

☑ Laser transmission through fiber optics allows for seamless integration with pipeline or robotic systems.

☑ **Laser power:** 1 kW, 1.5 kW and 2 kW.

☑ **Optimal laser wavelength:** 1070 nm.

☑ **Customizable pulse rate:** 50 Hz to 5 KHz.

☑ **Efficient power demand:** AC220V.

☑ **Adaptable output fiber length:** 16ft, 33ft and 49ft.

☑ Water cooling system.

☑ **Constant performance:** 2.5 kW, 2.8 kW and 3.5 kW.

☑ **Performance accuracy:** < 2%.

☑ Air humidity 10% to 90%.

*The Power Weld 42 is a machine that embodies innovation, efficiency and adaptability, making it an ideal choice for a wide range of welding applications. Experience unparalleled welding excellence with this exceptional equipment.*



# COMPACT WELD 32

*Introducing the Compact Weld 32, a fiber laser welding machine for stainless steel. Unleash the potential of this powerful machine designed for precise metal welding in stainless steel applications.*

*Compact Weld 32 is a 500W to 1000W stainless steel fiber laser welding machine that represents innovation and precision, making it an ideal choice for various metal welding applications. Experience unparalleled welding excellence with this exceptional equipment.*

## Features

☑ **Machine Size:** about 3 feet in length, 2 feet in width and 3 feet in height.

☑ **Machine Weight:** 440 pounds.

## Cutting-Edge Laser Power

☑ **Laser Power:** 0.5 kW to 2kW.

☑ Single or double oscillating welding head.

☑ **Laser Wavelength:** 1070nm.

☑ **Pulse Frequency:** 1 to 500Hz.

☑ Auto Wire Feeder.

☑ **Cooling Type:** water cooler.

☑ Continuation and modulation modes of operation.



# ELITE WELD 2000

Unlock the potential of your workshop with the portable and handheld ELITE WELD 2000 industrial laser welding machine. This exceptional equipment offers precision and versatility in every weld.

The ELITE WELD 2000 industrial, portable and handheld 1kW/1.5kW/2kW laser welding machine redefines welding efficiency and quality. Elevate your welding experience with this exceptional equipment, designed to meet the demands of modern industrial applications.

## Features

- ☑ **Laser power:** 1,5 kW IPG laser.
- Laser wavelength:** 1070nm.
- ☑ Automatic wire feeder.
- ☑ **Cooling type:** air cooling.
- ☑ **Laser welding depth (stainless steel):** 0.36 - 3.6 inches.
- ☑ **Laser welding depth (carbon steel):** 0.36 - 3.6 inches.
- ☑ **Laser welding depth (aluminum):** 0.04 to 0.2 inches.
- Voltage:** 240V, single-phase 60Hz and 240V, three-phase 60Hz.

## Ergonomic and portable design:

Built-in oscillation. 2-step trigger guaranteeing safety and control.





# MASTER WELD 43

Discover the power of the MASTER WELD 43: Air-cooled laser welding machine for stainless steel, carbon steel and iron.

Elevate your welding experience with MASTER WELD 43, a laser welding machine that combines precision, efficiency and adaptability for a variety of metal welding applications.

## Features

- ☑ Air cooling technology.
- ☑ Machine size: about 4 feet in length, 3 feet in width and 4 feet in height.
- ☑ Machine weight: 264 pounds.
- ☑ Precision laser welding head.
- ☑ Versatile application.



# MAX WELD 42

Experience precision and reliability like never before with the MAX WELD 42 Laser Welding Machine. Designed to excel in the most demanding industrial environments, this cutting-edge welding solution sets new standards in performance and efficiency, offering a wide range of features that ensure a smooth operation and exceptional results.

## Features

- ☑ High photoelectric conversion efficiency.
- ☑ Laser welding head integrating water cooling and shielding gas.
- ☑ Servo drive motor, precision lead screw transmission.
- ☑ **Laser power:** 1kW-12kW.
- ☑ Advanced driver.
- ☑ **Laser wavelength:** 1070nm.
- ☑ **Adjustable pulse rate:** 1-500Hz.

- ☑ CCD camera included for improved accuracy and monitoring.
- ☑ **Operation modes:** continuous or modulated.
- ☑ **Point adjustment range:** 0.004-0.1 inch.
- ☑ **Exceptional repeat accuracy:** 0.0004 inches.
- ☑ Voltage of 240V, single-phase 60Hz and 240V, three-phase 60Hz.

*The MAX WELD 42 Laser Welding Machine is custom designed for a wide range of applications. From stainless steel and carbon steel to iron, aluminum and galvanized sheets, the capabilities of this machine transcend industries. Whether it's aerospace equipment, shipbuilding, kitchen cabinets, elevators or stainless steel furniture, expect exceptional results every time.*



# WELD ARM6A 42

Unlock the immense capabilities of your welding pursuits with the ingeniously designed WELD ARM6A 42 Laser Welding Machine, featuring a high-precision 6-axis robotic arm that will completely transform your welding experience by effortlessly achieving intricate motions to position the laser with incredible accuracy, allowing you to perform complex welds in a wide array of positions and angles.

## Features

- ☑ **Machine Dimensions:** about 4ft\*2ft\*4ft.
- ☑ **Weight:** 606 pounds.
- ☑ **Laser power options:** 1 kW, 1.5 kW, or 2 kW.
- ☑ More precise laser welding head.
- ☑ Convenient operations with control buttons and screens.
- ☑ Constant water cooling.

- ☑ Precision redefined by the welding head.

## Precision and fluid movement

- ☑ Temperature mastery to maintain consistency.
- ☑ 22/44 pound load capacity and a wing-span of approximately 5 feet or 6 feet, allowing your creativity to lead the way.

*It embraces innovation through a 6-axis robotic arm, with an advanced control system, applicable to various industries, such as welding stainless steel, carbon steel, iron, aluminum, galvanized sheet and other metal materials. It can be used in aerospace equipment, ship-building, kitchen cabinets, elevators, shelves, stainless steel furniture and other industries.*



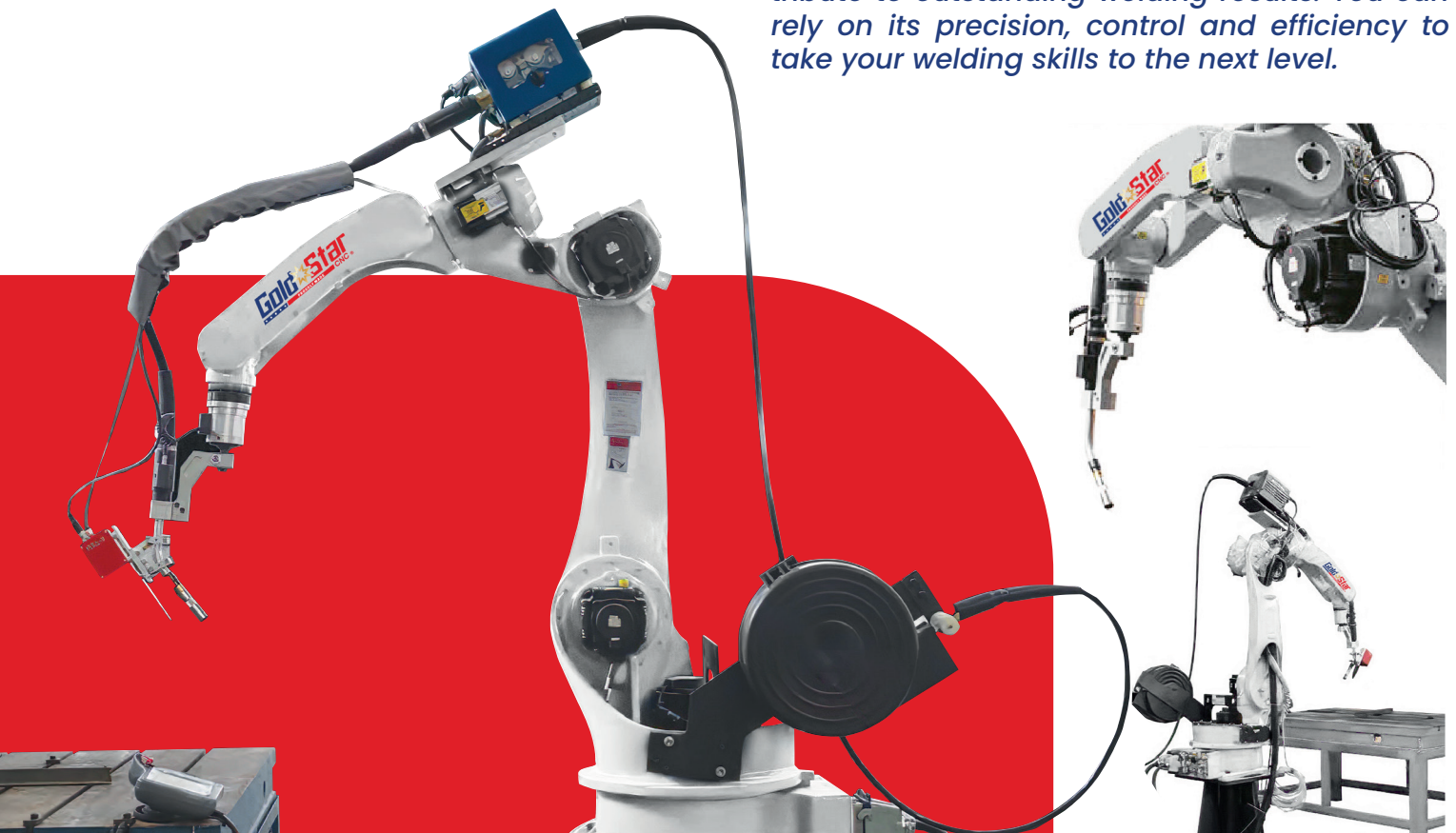
# ARC ARM MODELS PLUS / PRO / PULSE / BOOST / ELITE / ULTRA

Discover a range of models designed for various welding needs. From stainless steel to carbon steel and iron, experience unmatched welding versatility. With optimized

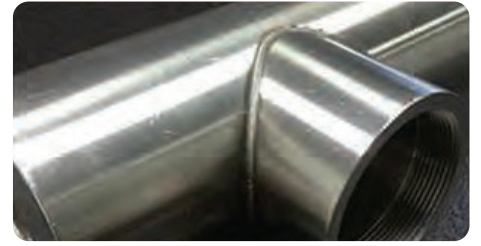
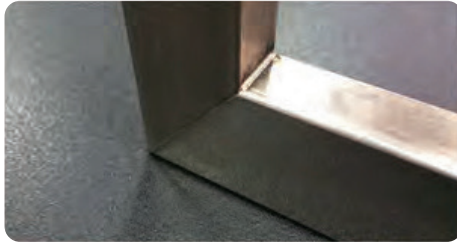
performance metrics, precise wire feeding, efficient cooling, and a compact design, this welding machine allows you to achieve exceptional welding results.

MODEL	Arc Arm Plus	Arc Arm Pro	Arc Arm Pulse	Arc Arm Boost	Arc Arm Elite	Arc Arm Ultra
Rated Input Voltage Frequency				380v/3phase		
Rated Input Capacity	14	25.2	24	34	34	43
Rated Input Current	28	38	38	51	51	65
Rated Output Voltage	31.5	39	39	44	44	44
Carbon Steel Stainless steel wire diameter	0.03 in / 0.04 in / 0.05 in		0.03 in / 0.04 in / 0.05 in / 0.055 in / 0.06 in			
Wire Diameter and Feed				Push wire		
Gas Flow				15-20		
Torch Cooling Method	Air	Air /Water	Air	Air	Air	Air
Enclosure rating				IP23		

*This machine features excellent performance measurements, precise wire feeding, effective cooling and a stylish design, all of which contribute to outstanding welding results. You can rely on its precision, control and efficiency to take your welding skills to the next level.*



# WELDING APPLICATION



## Application Materials:

Stainless steel, copper, aluminum, gold, chrome, silver, titanium, nickel and other metals or alloys. It can also be used for a variety of welds between different materials.

# APPLICATION INDUSTRIES

Medical Equipment



Food Machinery



Staircase Elevator



Car Production



Kitchen Cabinets



Motorcycle

Machine shell sheet metal welding, motorcycle automobile, kitchen cabinets, staircase elevator, food machinery, shelf, oven, stainless steel door window guardrail, distribution box, medical equipment, communications equipment, craft gifts, household and other industries.

# Global Solutions



# Gold Star

PROUDLY MADE CNC®





**ORDER NOW**



More information  
[www.goldstarcnc.us](http://www.goldstarcnc.us)



More information  
**(786)400-0910**