



LASER CLEANING

MACHINES CATALOG



ORDER NOW

 More information
www.goldstarcnc.us

 More information
(786) 400-0910



BLAST CL 52

The BLAST CL 52 is a versatile 3-in-1 laser machine capable of performing cleaning, welding, and cutting tasks on metals. This compact unit combines high-powered laser technology with a handheld design, offering remarkable flexibility. It features adjustable power up to 2 kW, making it suitable for a wide range of metal and alloy applications.

Features

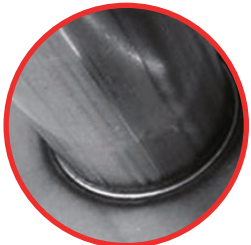
- ☑ **Machine Size:** Height: 5 ft x Width: 2 ft x Depth: 4 ft (Approximately).
- ☑ **Machine Weight:** 331 pounds (Approximately).
- ☑ **Working Voltage:** 240V Single Phase 60Hz and 240 Three Phase 60 Hz.
- ☑ **Machine Features:** The BLAST CL 52 is equipped with a self-developed three-in-one control system that allows seamless switching between welding, cleaning, and cutting modes. It includes multiple safety alarms and power/light cut settings for enhanced

user safety. The optimized water-cooled design ensures stable, long-term operation at power levels of up to 2 kW.

Machine Advantages

- ☑ **Stable Operation:** Real-time monitoring and advanced troubleshooting capabilities ensure consistent performance.
- ☑ **Flexible Parameters:** Adjust process parameters to achieve different effects.
- ☑ **Repeatable Results:** Consistent and high-efficiency results thanks to repeatable process parameters.

The BLAST CL 52 laser machine offers industry-leading versatility, safety, and performance. With its handheld, portable design, adjustable power levels of up to 2 kW, and specialized capabilities for welding, cutting, and cleaning, this 3-in-1 unit is an ideal solution for various metalworking tasks in diverse industrial applications.



Welding



Cleaning



Cutting



COMPACT CL 42

Compact CL 42 is a robust and versatile laser cleaning machine designed to cater to various cleaning needs. It utilizes cutting-edge technology to efficiently remove impurities and contaminants from surfaces. With power options ranging from 1kW to 2kW, this machine provides flexibility and precision in your cleaning processes.

Features

Machine Size and Weight:

- ☑ Size: 4 ft x 2 ft x 3 ft.
- ☑ Weight: 357 lbs / 441 lbs (Approximately).

Total Power:

- ☑ 1kW: 7.5 kW.
- ☑ 1,5kW: 9 kW.
- ☑ 2kW: 11.5 kW.

Cleaning Width/Beam Diameter:

- ☑ Standard: 0 - 11 in.
- ☑ Optional: 0 - 18 in.

Cleaning Gun/Head Weight:

- ☑ Whole Set: 12 lbs.
- ☑ Only Head: 2 lbs.

Maximum Pressure: 2 lbs.

Working Temperature: 32°F - 104°F.

Specified Voltage and Frequency:

- ☑ 240V Single Phase 60Hz.
- ☑ 240 Three Phase 60 Hz.
- ☑ 110V Single Phase 60Hz (Optional).
- ☑ 380V Three Phase 50Hz/60Hz (Optional).

Focusing Length: 1 in. - 24 in.

Output Fiber Length:

- ☑ Standard: 0 - 26 ft.
- ☑ Optional: 0 - 33 ft.
- ☑ Optional: 0 - 50 ft.
- ☑ Optional: 0 - 65 ft.

Cleaning Efficiency:

- ☑ 1kW: 215 - 430 sq ft/h.
- ☑ 1,5kW: 322 - 645 sq ft/h.
- ☑ 2kW: 430 - 861 sq ft/h (Efficiency varies with impurity levels).

- ☑ **Auxiliary Gases:** Nitrogen, argon, CO2.

Compact CL 42 laser cleaning machine is a high-performance solution that delivers efficient and precise cleaning across a variety of applications. Its adaptable power options, diverse cleaning capabilities, and advanced features make it a reliable choice for tackling cleaning challenges in different industrial settings.



WIZZARD CL 54

WIZZARD CL 54 Laser Cleaning Machine with Built-In Water Cooler and Rust Removal
The WIZZARD CL 54 industrial laser cleaning machine delivers powerful 3 kW capacity for removing rust, coatings, oxides, and other impurities from metal surfaces.

Machine Size:

- ☑ 5 ft x 4 ft x 6 ft.

Weight:

- ☑ 880 lbs / 1040 lbs.

Features

- ☑ 3 kW fiber laser with 1080 nm wavelength.
- ☑ 10-20 kHz modulation frequency.
- ☑ Closed-loop water cooling system.
- ☑ 12 lb complete cleaning gun assembly.
- ☑ 2 lb handheld laser head.

- ☑ 2 lbs max pressure.
- ☑ 32°F to 104°F operating temperature.

Working voltage:

- ☑ 240V Single Phase 60Hz and 240 Three Phase 60 Hz.

Cleaning Capabilities:

- ☑ 0 - 11 in beam diameter.
- ☑ 50-90 ft²/hr efficiency.

Configuration:

- ☑ 0-49 ft fiber cable length.
- ☑ Adjustable 3 ft focusing lens.

With its industrial 3 kW laser and built-in cooling, the WIZZARD CL 54 delivers effective cleaning and surface restoration for metal processing applications.



GLEAM CL 32 / GLEAM CL 52

The GLEAM Series Laser Cleaning Machines represent the pinnacle of cutting-edge technology in the field of industrial surface cleaning. These innovative machines are designed to meet the diverse needs of various industries with precision and efficiency.

Machine Specifications

- Machine size:
3 ft x 2 ft x 4 ft / 5 ft x 2 ft x 3 ft.
- Weight: 796 lbs.

Connect type

- Output power: 3 kW (customizable for other power options).
- Central wavelength: 1080 nm.
- Modulation frequency: 10–20 KHz.
- Cooling method: Water cooling.
- Total power: 3 kW (optional 16 kW).
- Working voltage: 240V Single Phase 60Hz and 240. Three Phase 60 Hz.
- Cleaning width/Beam diameter: 0–11 in. (Standard configuration).

- Cleaning gun/head weight: Whole set 12 lbs, only head 1 lb.
- Maximum pressure: 2 lbs.
- Working temperature: 32–104°F.

Optics and Performance

- Focusing length: (F1000).
- Output fiber length: 0–49 ftt (Standard), 0–66 ft (Optional).
- Cleaning efficiency: 538–968 square ft/h . (depends on specific impurities).
- Auxiliary gases:** Nitrogen, argon, and CO2.

With a powerful 3 kW output, the GLEAM CL 32 / GLEAM CL 52 Handheld Laser Cleaning Machine offers efficient rust removal and surface cleaning. Its versatile design allows for various cleaning tasks across industrial needs.



POLISHER PRO CL 52

Experience enhanced cleaning efficiency with the Polisher Pro CL 52, a Second-generation Continuous Laser Cleaner. Equipped with advanced features such as adjustable power settings and a portable design, it offers precise cleaning solutions tailored to diverse applications.

Features

- ☑ **Connect Type:** QBH.
- ☑ **Output Power:** 1 kW – 2 kW.
- ☑ **Central Wavelength:** 1080nm.
- ☑ **Modulation Frequency:** 10–20KHz.
- ☑ **Cooling Method:** Water cooling (Optional: Air cooling (1 kW / 1.5 kW) / IPG(1.5 kW)).

Machine Size and Weight:

- ☑ Compact and Lightweight.
- ☑ Size: 5 ft x 2 ft x 5 ft.
- ☑ Weight: 881 lbs.

Total Power Consumption

Laser Power : Power consumption.

- ☑ 1 kW: 8 kW.
- ☑ 1.5 kW: 9 kW.
- ☑ 2 kW: 12 kW.

Cleaning Width/Beam Diameter

- ☑ Standard: 0–11 in.
- ☑ Optional: 0–18 in.

Cleaning Gun/Head Weight

- ☑ Whole set: 6 lbs.
- ☑ Only head: 1 lb.
- ☑ **Maximum Pressure:** 2 lbs.
- ☑ **Working Temperature:** Operating Range: 32–104°F.
- ☑ **Working voltage:** 240V Single Phase 60Hz and 240 Three Phase 60 Hz.
- ☑ **Focusing Length:** D30mm–F600mm.

Output Fiber Length

- ☑ Standard: 0–26 ft.
- ☑ Optional: 0–33 ft.
- ☑ Optional: 0–49 ft.
- ☑ Optional: 0–66 ft.

Cleaning Efficiency

- ☑ 1 kW: 20–40 sq. ft/h.
- ☑ 1.5 kW: 30–60 sq. ft/h.
- ☑ 2 kW: 40–80 sq. ft/h (varies based on impurity levels)

- ☑ **Auxiliary Gases:** Nitrogen, argon, CO₂.

The Polisher Pro CL 52 is a Second-generation Continuous Laser Cleaner, available in power options ranging from 1 kW to 2 kW, is designed to efficiently address various industrial cleaning needs. This compact and lightweight machine swiftly removes rust, coatings, stains, and contaminants from metal surfaces.



POLISHER CL 42

Introducing the Polisher CL 42, a First-generation Continuous Laser Cleaner, a versatile and efficient machine available in power options ranging from 1 kW to 2 kW. This compact and sturdy device is designed to tackle a variety of industrial cleaning tasks. It swiftly removes rust, coatings, stains, and contaminants from metal surfaces. Equipped with advanced features such as adjustable power settings and optional air cooling, it offers precise cleaning solutions tailored to diverse applications.

Features

- ☑ **Output Power:** 1 kW - 2 kW.
- ☑ **Central Wavelength:** 1080nm.
- ☑ **Modulation Frequency:** 10-20KHz.
- ☑ **Cooling Method:** Water cooling .
((Optional: Air cooling with GW(1 kW / 1.5 kW) / IPG(1.5 kW)).
- Machine Size and Weight:** Compact and Sturdy
- ☑ **Size:** 4 ft x 2 ft x 5 ft.
- ☑ **Weight:** 650 lbs.
- Total Power:**
- ☑ 1 kW: 8 kW.
- ☑ 1.5 kW: 9 kW.
- ☑ 2 kW: 12 kW.

Cleaning Width/Beam Diameter:

- ☑ **Standard:** 0-11 in.
- ☑ **Optional:** 0-18 in.

Cleaning Gun/Head Weight

- ☑ **Whole set:** 6 lbs.
- ☑ **Only head:** 1 lb.



- ☑ **Maximum Pressure:** 2 lbs.
- ☑ **Working Temperature:** Operating Range: 32-104°F.
- ☑ **Working voltage:** 240V Single Phase 60Hz and 240 Three Phase 60 Hz.
- ☑ **Focusing Length:** D30mm-F600mm.

Output Fiber Length:

- ☑ **Standard:** 0-26 ft.
- ☑ **Optional:** 0-33 ft.
- ☑ **Optional:** 0-49 ft.
- ☑ **Optional:** 0-66 ft.

Cleaning Efficiency:

- ☑ 1 kW: 30-50 sq. ft/h.
- ☑ 1.5 kW: 40-70 sq. ft/h.
- ☑ 2 kW: 50-90 sq. ft/h (varies based on impurity levels).
- ☑ **Auxiliary Gases:** Nitrogen, argon, CO2.

Experience the Polisher CL 42, the first-generation continuous laser cleaner that brings the enhanced cleaning efficiency you were looking for to your industrial processes. Discover how this compact and versatile machine, with adjustable power settings and optional air cooling, swiftly removes rust, coatings, stains, and contaminants from metal surfaces. It's designed to provide precise cleaning solutions.



PULSAR CL 32

The Pulsar CL 32 is a compact, high-powered pulsed laser cleaning system optimized for industrial de-coating and surface preparation applications.

Machine Size

- Size: 3 ft x 2 ft x 3 ft.
- Weight: 180 lbs.
- Working Voltage:
240V Single Phase 60Hz and 240 Three Phase 60 Hz.

Features

- 100W fiber laser with 1060–1085nm wavelength.
- Random polarization and optical isolator.
- Average power of 4,600W and pulse energy of 1.25 mJ
- Superior beam quality with $M2 < 16$
5.5–8mm beam diameter.
- Pulse duration of 250–290 ns at 80 kHz frequency.
- 10–100% output power tunability.
- 3 ft fiber optic cable length.

Machine Advantages

With the precision and peak power of pulsed laser technology, the Pulsar CL 32 efficiently removes coatings and contaminants from metal and industrial surfaces. Key benefits include:

- Effective cleaning across diverse materials.
- High 10–100 kHz pulse rates for fast cleaning speeds.
- Compact size and maneuverable design.
- Air cooling for low maintenance needs.
- Wide 32–104°F operating temperature range.

Offering pinpoint accuracy and adjustable settings, the Pulsar CL 32 provides unmatched cleaning performance and flexibility ideal for de-coating, weld seam preparation, corrosion removal, and other surface conditioning applications.



POWER PULSAR CL 43

The Power Pulsar CL 43 pulse laser cleaning machine delivers efficient industrial surface preparation and de-coating. This system is available in 300W and 500W models to match various cleaning requirements.

- ☑ Machine Size: Size: 4 ft x 3 ft x 4 ft Weight: 640 lbs.
- ☑ Working Voltage:
- ☑ 240V Single Phase 60Hz and 240 Three Phase 60 Hz.

Features

- ☑ Pulse laser with 1064nm wavelength.
- ☑ Random polarization and 10-100% power tunability 300W power, 120-160ns pulse duration at 20-50kHz frequency.
- ☑ 500W power, 120-160ns pulse duration at 10-50kHz frequency.
- ☑ Maximum power consumption up to 5,500W.

- ☑ DB25 control mode.
- ☑ Water cooling on 500w model, air cooling on 300w.

Machine Advantages

With pulsed peak power up to 500W, the Power Pulsar CL 43 efficiently cleans surfaces and removes coatings, oxides, and contaminants. Key benefits include:

- ☑ Thorough cleaning of metals, alloys, composites.
- ☑ High pulse rates for rapid cleaning.
- ☑ Precise, selective ablation without damage.
- ☑ Rugged industrial design.
- ☑ 50-104°F operating temperature range.

Offering adjustable settings and high-power capacity, the Power Pulsar CL 43 pulse laser is ideal for the most demanding cleaning and surface preparation applications.



LASERJET CL 31

The LaserJet CL 31 is a 50W Laser Cleaning Machine that redefines the standards for efficient and reliable material cleansing. This compact and powerful tool is designed to cater to a wide spectrum of applications, offering unmatched control and performance. Let's delve into the details of this remarkable piece of technology that combines power, precision, and adaptability like never before.

Machine Size

- ☑ Dimensions: 3 ft x 1 ft x 3 ft (Approximately).
- ☑ Machine Weight: 88 pounds (Approximately).

- ☑ Working voltage: 240V Single Phase 60Hz and 240 Three Phase 60 Hz.

Machine Features

- ☑ Power: 50W / 100W.
- ☑ Wavelength (nm): 1060~1085.
- ☑ Polarization: Random.
- ☑ Optical Isolator: Yes.
- ☑ Nominal Average Output Power: 50 w / 100 w.
- ☑ Single Pulse Energy (mJ): 1-50kHz / 1,25 - 80kHz.
- ☑ Beam Quality (M2): <1,6.
- ☑ Beam Diameter (inches): 0.2 - 0.3 in. (Approximately).
- ☑ PulseDuration (ns): 120-150 @ 50kHz / 250-290 @ 80kHz.

- ☑ Pulse Repetition Rate (kHz): 50-100 / 80-120.
- ☑ Output Power Tunability (%): 10-100.
- ☑ Output Fiber Cable Length (m): 10 ft.
- ☑ Power Consumption (68°F) : 340w / 380w.
- ☑ Cooling: Forced air cooled.
- ☑ Operating Temperature (°F): 32°F~104°F (Approximately).
- ☑ Store Temperature (°F): -4°F~140°F (Approximately).
- ☑ Humidity (%): <80.

Machine Advantages

- ☑ **Versatile:** With adjustable power output and precise control over pulse parameters, it suits a wide array of cleaning tasks.
- ☑ **Efficient:** High cleaning efficiency with the capability to handle various contaminants.
- ☑ **Portable:** Compact size and manageable weight enable easy mobility and accessibility.

The LaserJet CL 31 is a 50W Laser Cleaning Machine that combines precision, efficiency, and versatility in a compact package. Its robust features and advantages make it an excellent choice for a broad spectrum of cleaning and surface treatment applications. Operating within a wide temperature and humidity range, it offers reliable performance across various tasks.



PHOTON CASE CL 22

The Photon Case CL 22 is a portable laser cleaning machine packaged in a protective carrying case for easy transport and storage. This versatile and reliable tool is designed for a wide range of cleaning, welding prep, and cutting applications on metals. With advanced features and specifications tailored to meet your needs, the Photon Case CL 22 delivers exceptional laser power and performance.

TECHNICAL SPECIFICATIONS

Machine Size (feet): 2 x 2 x 1 ft

Machine Weight (pounds): 103 pounds

Power: 100W

Wavelength (nm): 1060-1085

Polarization: Random

Optical Isolator: Yes

Nominal Average Output Power (W): 100

Single Pulse Energy (mJ): 1 at 80kHz

Beam Quality (M2): Less than 16

Beam Diameter (inches): 0.2-0.3

Pulse Duration (ns): 250-290 at 80kHz

Pulse Repetition Rate (kHz): 80-120

Output Power Tunability (%): 10-100

Output Fiber Cable Length (m): 3.0

Working Voltage:

240V Single Phase 60Hz and 240 Three Phase 60Hz

Power Consumption (68°F): 380W

Cooling: Forced Air Cooled

Operating Temperature (°F): 32°F~104°F

Store Temperature (°F): -4°F~140°F

Humidity (%): Less than 80

Features

- ✔ Versatile cleaning, welding, and cutting capabilities.
- ✔ Advanced control system for precise operations.
- ✔ Reliable and efficient performance.
- ✔ Flexible power adjustment for various tasks.

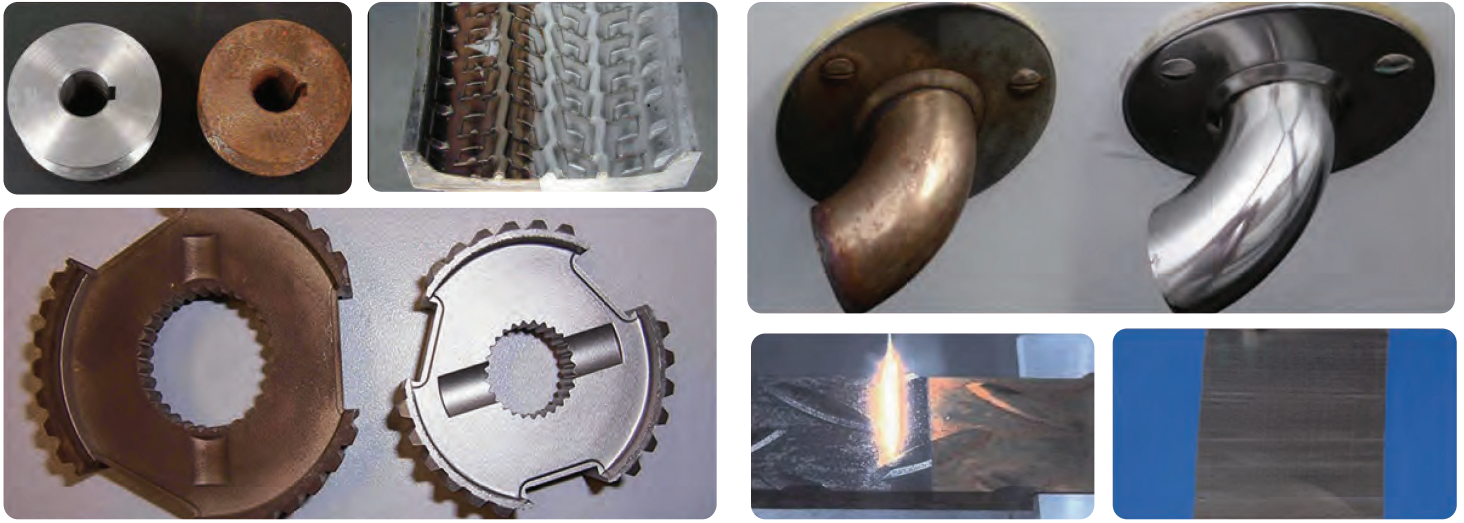
Machine Advantages

- ✔ High-power output for effective results.
- ✔ Wide range of applications on metals.
- ✔ Robust and compact design.
- ✔ Excellent cooling system for prolonged operation.

Suitable for surface preparation, weld seam cleaning, corrosion removal, and maintenance tasks, the Photon Case CL 22 is a valuable addition to your metal fabrication and industrial processes. Expect high-quality, consistent laser cleaning results from this portable powerhouse machine.



LASER CLEANING APPLICATION



APPLICATION INDUSTRIES



Rail Traffic



Aerospace



Ship Building



Car Production



High-end Machines Tools



Tire Mold

Global Solutions



Gold Star
PROUDLY MADE CNC®





ORDER NOW



More information
www.goldstarcnc.us



More information
(786)400-0910